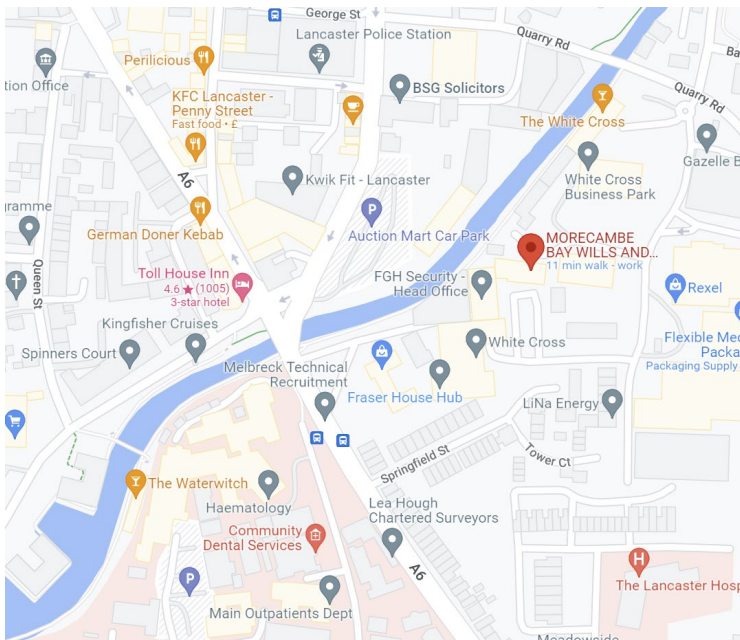


## HOW TO FIND US

**Our offices are at**

**The Gatehouse (first floor), White Cross Business Park, Lancaster LA1 4XQ**



City Centre Map



White Cross Gatehouse

We are situated directly above Reception, the door to which you can see to the left of this picture.

.

### On foot

Enter White Cross on South Road (see car directions), or from Quarry Road. Make your way to Reception which is situated in The Gatehouse.

### By bus

There is a **bus stop** right outside White Cross – the buses that go south past the University to Preston or Blackpool stop here. Buses going North stop at the bus stop opposite (outside the hospital)

**By car** – (parking is free but please **register your car** to avoid a parking fine):

White Cross is on South Road, directly opposite the Royal Lancaster Infirmary.



From the North, follow the one-way system towards the university and turn left immediately after the traffic lights near the hospital.



From the South, after you have passed the "Pointer" roundabout, look out for the bus stop on your left by the hospital. Just before the traffic lights and turn RIGHT (across the traffic) into the second turning and enter White Cross.



## Once at White Cross

If you are driving, find a parking space and then return to the Reception at the Gatehouse. **Please register your car at Reception** if you are driving – make sure you tell them that it is an appointment with Morecambe Bay Wills.

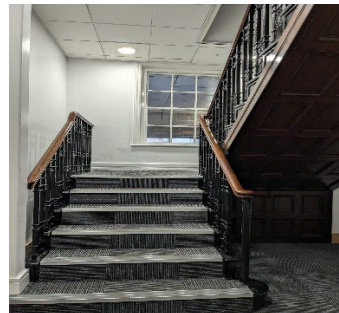
If you have an appointment, please wait in Reception, and we will come and collect you 5 minutes before your appointment.

If you are just calling in, please make your way through Reception and up the staircase to your right. We are directly at the top of the staircase. Please ring the bell and wait – just in case we already have clients in our main office.

### White Cross Reception



### The Gatehouse staircase



### Our offices



If you need assistance, please call us on **01524 571032** and we will come and meet you.